

Minsup 'A' Claw Couplings - Tail



SG Iron Part No.	Size	Stainless Steel Part No.	Size
MINAH010	3/8"		
MINAH015	1/2"	MINAH015SS	1/2"
MINAH020	3/4"	MINAH020SS	3/4"
MINAH025	1"	MINAH025SS	1"
MINAH032	1 1/4"		

Minsup 'A' Claw Couplings - Male



SG Iron Part No.	Size	Stainless Steel Part No.	Size
MINAM010	3/8"		
MINAM015	1/2"	MINAM015SS	1/2"
MINAM020	3/4"	MINAM020SS	3/4"
MINAM025	1"	MINAM025SS	1"
MINAM032	1 1/4"		

Minsup 'A' Claw Couplings - Female



SG Iron Part No.	Size	Stainless Steel Part No.	Size
MINAF010	3/8"		
MINAF015	1/2"	MINAF015SS	1/2"
MINAF020	3/4"	MINAF020SS	3/4"
MINAF025	1"	MINAF025SS	1"

Minsup 'A' Crimped Ferrule

SG Iron Part No.	Size	Stainless Steel Part No.	Size
MINACF015	1/2"	MINACF015SS	1/2"
MINACF020	3/4"	MINACF020SS	3/4"
MINACF025	1"	MINACF025SS	1"

Minsup 'A' Safety Claw Clamp - 2 Bolt



Part No.	Size
MINAC015	1/2"
MINAC020	3/4"
MINAC025	1"

Minsup 'A' Safety Locking Pin



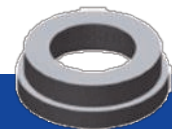
Part No.	Size
MINLP	

Minsup 'A' Safety Claw Clamp - 4 Bolt



Part No.	Size
MIN4040	1 1/2"
MIN4050	2"

Minsup 'A' Seals



Part No.	Description
MINAS-NR	Natural Rubber
MINAS-V	Viton
MINAS	Nitrile Rubber

NOROSCO

83 Elphinstone Street
 North Rockhampton 4701
 Phone: 07 4928 7777 Fax: 07 4926 1424
 Sales: noroscosales@cqnet.com.au

Minsup 'B' Claw Couplings - Tail

Minsup 'B' are for Air and Water applications only, standard are Malleable Iron, also available in Brass and Stainless Steel.



Malleable Iron Part No.	Size	Brass Part No.	Size	Stainless Steel Part No.	Size
MINBH010	3/8"	MINBH010B	3/8"	MINBH010SS	3/8"
MINBH015	1/2"	MINBH015B	1/2"	MINBH015SS	1/2"
MINBH016	5/8"	MINBH016B	5/8"	-	-
MINBH020	3/4"	MINBH020B	3/4"	MINBH020SS	3/4"
MINBH025	1"	MINBH025B	1"	MINBH025SS	1"

Minsup 'B' Claw Couplings - Male

Minsup 'B' are for Air and Water applications only, standard are Malleable Iron, also available as NPT - Malleable Iron (N), Brass (NB) and Stainless Steel (NSS).



Malleable Iron Part No.	Size	Malleable Iron (NPT) Part No.	Size	Brass (NPT) Part No.	Size	Stainless Steel (NPT) Part No.	Size
-	1/4"	MINBM006N	1/4"	MINBM006NB	1/4"	-	1/4"
-	3/8"	MINBM010N	3/8"	MINBM010NB	3/8"	MINBM010NSS	3/8"
MINBH015	1/2"	MINBM015N	1/2"	MINBM015NB	1/2"	MINBM015NSS	1/2"
MINBH020	3/4"	MINBM020N	3/4"	MINBM020NB	3/4"	MINBM020NSS	3/4"
MINBH025	1"	MINBM025N	1"	MINBM025NB	1"	MINBM025NSS	1"

Minsup 'B' Claw Couplings - Female

Minsup 'B' are for Air/Water applications only, standard are Malleable Iron, also available as NPT - Malleable Iron (N), Brass (NB) and Stainless Steel (NSS).



Malleable Iron Part No.	Size	Malleable Iron (NPT) Part No.	Size	Brass (NPT) Part No.	Size	Stainless Steel (NPT) Part No.	Size
MINBF006	1/4"	MINBF006N	1/4"	MINBF006NB	1/4"	-	1/4"
MINBF010	3/8"	MINBF010N	3/8"	MINBF010NB	3/8"	MINBF010NSS	3/8"
MINBF015	1/2"	MINBF015N	1/2"	MINBF015NB	1/2"	MINBF015NSS	1/2"
MINBF020	3/4"	MINBF020N	3/4"	MINBF020NB	3/4"	MINBF020NSS	3/4"
MINBF025	1"	MINBF025N	1"	MINBF025NB	1"	MINBF025NSS	1"

Minsup 'B' Claw Clamps



SG Iron Part No.	Size
MINBC010	3/8" - Barb OD 17.46-22.23 mm
MINBC015	1/2" - Barb OD 25.4-30.16mm
MINBC020	3/4" - Barb OD 28.58-33.34mm
MINBC025	1" - Barb OD 33.34-38.10 mm
MINBC025A	1" - Barb OD 38.10-46.04 mm

Minsup 'B' Safety Clips



Part No.	Size
MINBSC	

Minsup Fittings

Minsup 'Surelock' Claw Couplings - Tail

Minsup 'Surelock' are for multi-purpose Air and Water applications, commonly used in construction and mining, providing a simple, reliable and air tight connection. Standard are SG Iron.



SG Iron Part No.	Size	Stainless Steel Part No.	Size
MINSH010	3/8"	-	3/8"
MINSH015	1/2"	MINSH015SS	1/2"
MINSH020	3/4"	MINSH020SS	3/4"
MINSH025	1"	MINSH025SS	1"
MINSH032	1 1/4"	-	1 1/4"
MINSH040	1 1/2"	-	1 1/2"
MINSH050	2"	MINSH050SS	2"
MINSH075	3"	-	3"

Minsup 'Surelock' Claw Couplings - Male

Minsup 'Surelock' are for multi-purpose Air and Water applications, commonly used in construction and mining, providing a simple, reliable and air tight connection. Standard are SG Iron.



SG Iron Part No.	Size	Stainless Steel Part No.	Size
MINSM010	3/8"	-	3/8"
MINSM015	1/2"	MINSM015SS	1/2"
MINSM020	3/4"	MINSM020SS	3/4"
MINSM025	1"	MINSM025SS	1"
MINSM032	1 1/4"	-	1 1/4"
MINSM040	1 1/2"	-	1 1/2"
MINSM050	2"	MINSM050SS	2"
MINSM075	3"	-	3"

Minsup 'Surelock' Claw Couplings - Female

Minsup 'Surelock' are for multi-purpose Air and Water applications, commonly used in construction and mining, providing a simple, reliable and air tight connection. Standard are SG Iron.



SG Iron Part No.	Size	Stainless Steel Part No.	Size
MINSF010	3/8"	-	3/8"
MINSF015	1/2"	MINSF015SS	1/2"
MINSF020	3/4"	MINSF020SS	3/4"
MINSF025	1"	MINSF025SS	1"
MINSF032	1 1/4"	-	1 1/4"
MINSF040	1 1/2"	-	1 1/2"
MINSF050	2"	MINSF050SS	2"
MINSF075	3"	-	3"

Minsup Safety Claw Clamp - 4 Bolt with Chain
 Suitable for Minsup 'A' and Minsup "Surelock"



Part No.	Size
MIN4CC040	1 1/2"
MIN4CC050	2"

Minsup 'Surelock' Bellows Seal



Composite Part No.	Size	Viton Part No.	Size
MINSSS	3/8" - 1 1/4"	MINSSSV	3/8" - 1 1/4"
MINSSM	1 1/2" - 2"	MINSSMV	1 1/2" - 2"
MINSSL	3"	MINSSLV	3"

Minsup Safety Locking Pin



Part No.
MINLP

Minsup 'B' Washers



Part No.	Description
MINBSR	Rubber -29°C to 71°C
MINBSN	Neoprene -29°C to 88°C
MINBSV	Viton -30°C to 200°C